



WORLD SCIENCE FORUM

Budapest 2024

*The science and policy interface at
the time of global transformations*



WORLD SCIENCE FORUM
BUDAPEST



Open Infrastructures for Responsible Research Assessment

Natalia Manola, CEO OpenAIRE



WORLD SCIENCE FORUM
BUDAPEST

THE PARADOX

Investing in Open Infrastructures for Research,
Yet Relying on Closed Systems for Research
Assessment



WORLD SCIENCE FORUM
BUDAPEST

The Emerging Research Environment

Facts



Data-Driven Science

Harnessing the omnipresence of data for research



Open Science

Empowering collaboration and fostering innovation



Multi-disciplinarity

Addressing complex societal challenges through cross-disciplinary efforts



AI at the Forefront

Leveraging cutting-edge research software, models, machine learning



Interconnected everything

Bridging research, industry, public sector, and society

The Emerging Research **Infrastructure Ecosystem**

Open Infrastructures to the rescue

Research Diversity: Publications, data, software, models, methods, and other research outputs

Community-Centered: Embedding community knowledge and practices to ensure relevance

Interoperability: Designed to integrate seamlessly as part of institutional, national, or global research infrastructure ecosystems

Cost Efficiency: Complementing institutional investments while minimizing redundancy

Equity and Inclusion: Ensuring fair and inclusive access for all stakeholders

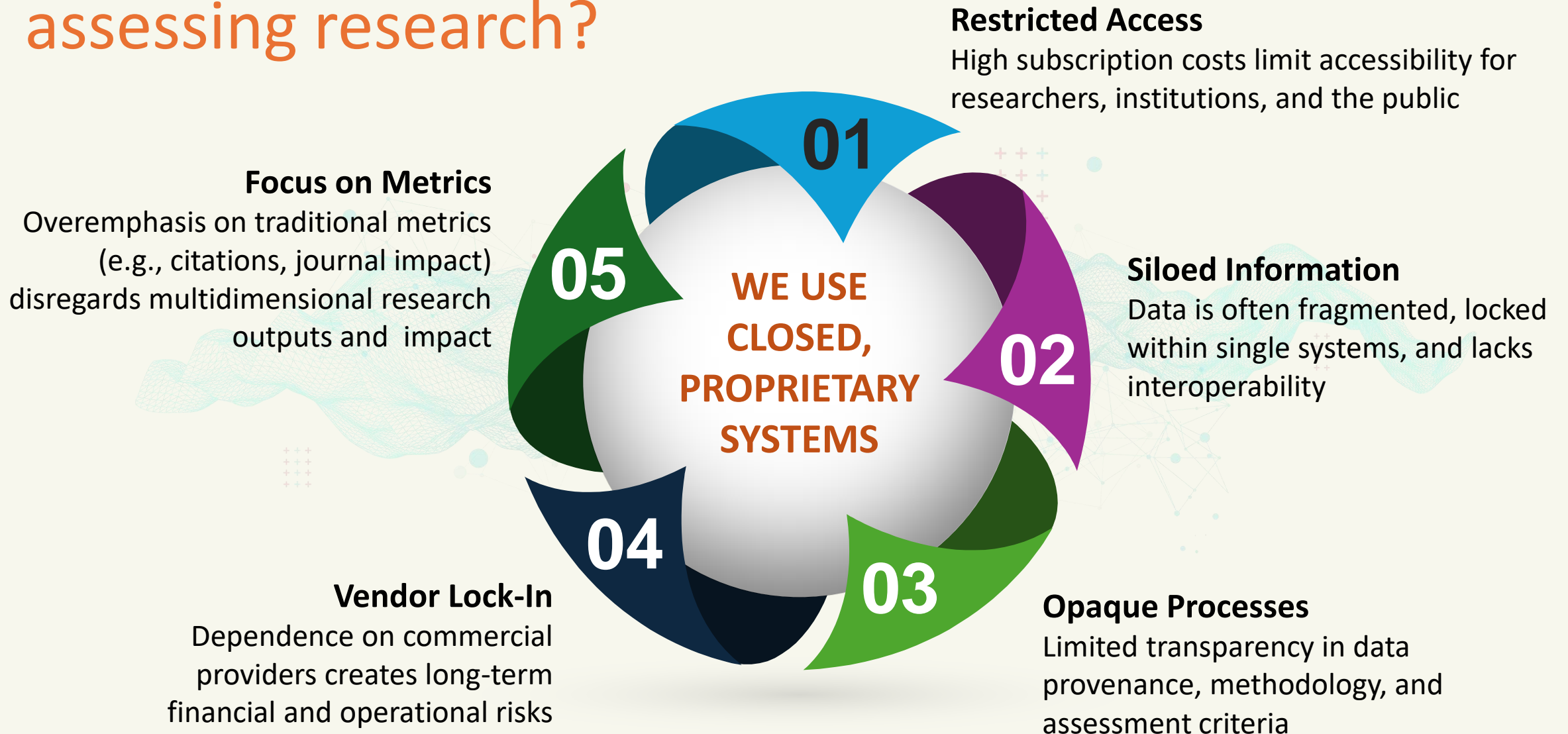
Sustainability: Built with open standards to ensure long-term usability

Global Collaboration: Facilitating interconnected research efforts

Total amount of financial investments in EOSC and Open Science in 2022 (in millions of Euro)

479.13 M

How are we currently assessing research?



Navigating the Roadblocks: Challenges in **Sustaining, Scaling & Adopting** Open Infrastructures for Research Assessment

Technical Complexity

Managing sophisticated technological frameworks and large-scale data ecosystems

Sustainable Funding

Securing continuous funding for development, maintenance, operation and evolution

Quality & Trust

Maintaining high-quality data, tools, and services while meeting the rigorous demands

Resistance to Change

Convincing users to transition from proprietary systems to open alternatives



Working Group on OI4RRA

Enable institutions to move from proprietary infrastructure and research information, to open (interoperable) alternatives—in support of the transition to responsible research assessment practices.

76
members

42
organisations





OI4RRA's workplan

1

Develop principles and characteristics for OI fit for RRA

2

Collect case studies of institutions transitioning to OA

3

Conduct interviews to find out the barriers

Contact us

4

Develop a conceptual reference

Infrastructure components and how they link to institutions

5



Describe OI in a concrete & informative way

Contact us

In progress

In progress

To be open for consultation December 2024



COARA



OpenAIRE

Thank you!

Contact us for more information



Natalia Manola natalia.manola@openaire.eu



Angeliki Tzouganatou angeliki.tzouganatou@openaire.eu



WORLD SCIENCE FORUM
BUDAPEST